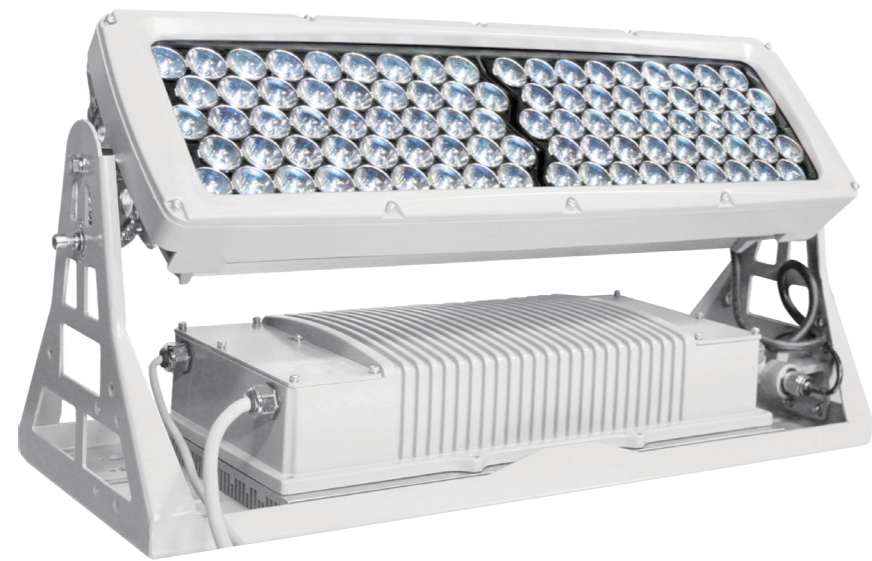


**DYNAMIC WHITE**

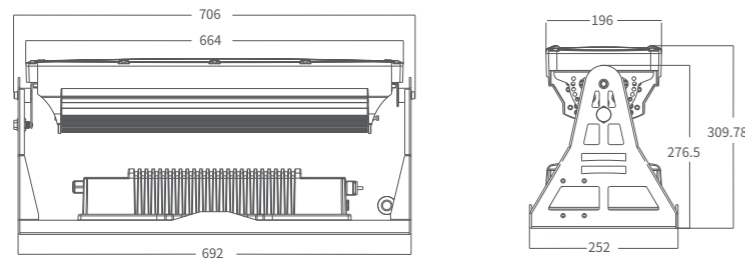
# TARPON i90

## AM723SCT/SWT/CAT

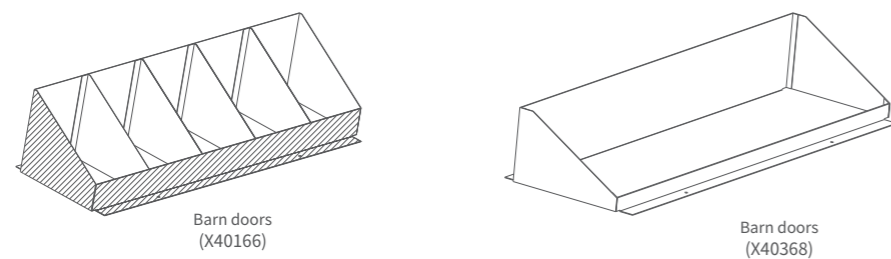
Dynamic color flood light 300 is the first LED high-power to replace 1200W metal halide flood light, it has been used in the market for more than ten years. It has excellent quality and won the trust of customers. Various large-scale outdoor lighting projects provide true green and energy-saving all-round lighting solutions. The product performance is stable, and there are a variety of different light source configurations to meet the needs of different projects.



### DIMENSIONS



### DIMENSIONS



### TECHNICAL DATA

PRODUCT	input voltage	Max.Power	Lumen	Peak Intensity	LED Qty	Optics
<b>TARPON i90 white</b>						
AM723SCT	AC100-240V	260W	14659lm	596073cd (6°)	90pcs 冷白	6° (12° 25° 45°, 40x12°)
AM723SWT	AC100-240V	260W	11080lm	288427cd (6°)	90pcs 暖白	6° (12° 25° 45°, 40x12°)
AM723CAT	AC100-240V	260W	13860lm	496025cd (6°)	90pcs 琥珀+冷白	6° (12° 25° 45°, 40x12°)

### SPECIFICATIONS



### PHOTOMETRIC DATA

#### TARPON i90 white

